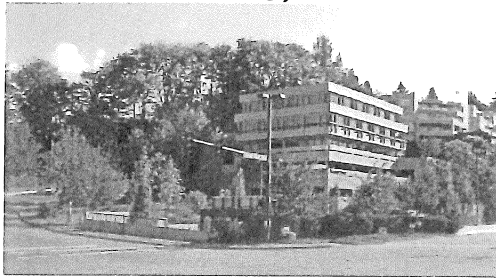


NEWBORN MD

Clinic Directions
2835 82nd AVE S.E. Suite 200
Mercer Island, Washington
98040
Phone: 206-232-0963
Fax: 206-232-0965
newbornmd@yahoo.com



Westside

From I-5 (Seattle) take 1-90 East to Mercer Island to the Island Crest Way exit (#7B). Stay in the right hand lane and take your first right onto SE 30th Street. Turn right at the stop sign at 80th Ave SE. Turn right again at SE 28th Street. Go straight through the stoplight at Island Crest Way. Go up the hill and the Rosauer Plaza building is on your immediate right. Please park in the upper parking lot in "Patient Parking NEWBORN MD".

Eastside

From I-405 (Bellevue) take I-90 West to Mercer Island to the Island Crest Way exit (#7). Turn left onto Island Crest Way. At the second stoplight, turn left onto SE 28th street. Go up the hill and the Rosauer Plaza building is on your immediate right. Please park in the upper parking lot in "Patient Parking NEWBORN MD".

*Take the elevator to the second floor and Suite 200 is to the left as you exit the elevator.

